

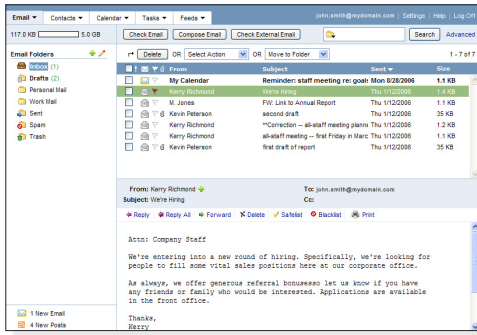
Using Webmail

Webmail is supported in the following browsers:

Windows — Internet Explorer 6, Internet Explorer 7, Firefox 2, and Firefox 3

Mac OSX — Safari 2, Safari 3, Firefox 2, and Firefox 3

The Webmail Window



Logging In to Webmail

1. Visit the webmail login page for your domain. If you're not sure what the login page URL is, please contact your email administrator.
2. In the **Email Address** box, enter your complete email address, using all lowercase letters.
3. In the **Password** box, enter your password.
4. Depending on your login page setup, you may have additional login options available.
5. Click the **Log In** button.

Checking for New Email

By default, webmail checks for new email automatically. To manually check for new email, click the **Check Email** button. Or, click the arrow on the **Email** tab and select **Check Email**.

Note: To indicate how often webmail should check for new email, select **Settings / General Settings**. Select an interval from the "Check for new email every" drop-down menu.

Previewing or Opening an Email

You can use the preview pane to display a selected email without opening it in a separate window. To preview an email, click once on the email, as it appears in the email list. Or, to open an email in a separate window, double-click the email.

Note: To display or hide the preview pane, select **Settings / General Settings**. Check or clear the "Display the preview pane" checkbox.

Opening or Saving an Attachment

When someone sends you an email that contains an attachment, the attachment name will appear in the Attachments area, above the message body.

To open an attachment:

1. Click once on the attachment name.
2. Open the attachment according to your web browser's directions.
3. If your computer has the necessary software installed for opening the attachment, the attachment will open automatically. Otherwise, you may be prompted to select an appropriate application for opening the attachment.

To save an attachment:

1. Click once on the attachment name. Or, if there are multiple attachments, click the disk icon to save all attachments at one time.
2. Save the attachment according to your web browser's directions.
3. Select the location where you want to save the attachment.
4. Click the **Save** or **OK** button.

Displaying and Hiding the Full Header

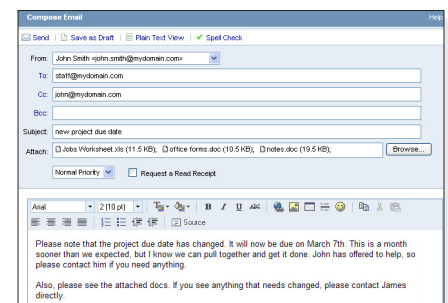
To view full header information for an email, double-click the email to open it in a separate window. Click the **Full Header** link, located in the upper right corner of the window.

Printing an Email

To print an email, select or open the email and then click the **Print** link. Print the email according to your web browser's directions.

Composing a New Email

1. Click the **Compose Email** button. Or, click the arrow on the **Email** tab and select **Compose Email**.
2. Select an identity from the **From** drop-down menu, if available. (The **From** drop-down menu will only appear if you have more than one identity.)
3. Enter recipient email addresses in the **To** box, separating multiple email addresses with a comma or semicolon.
4. To send a carbon copy (Cc) or blind carbon copy (Bcc), enter recipient email addresses in the **Cc** or **Bcc** boxes.
5. Enter a description of the email in the **Subject** box.
6. Enter the text of your email in the message body.
7. Click the **Send** link.

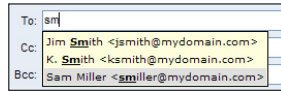


Addressing an Email

Webmail includes several tools to help you address your email.

Address Auto-Complete

As you type a name or email address in the To, Cc, or Bcc box, webmail will attempt to complete the address with a matching address from your contact list. Use your arrow keys to select a suggested match, and then press the **Tab** (or **Enter/Return**) key on your keyboard.



Contacts

You can select contacts from your contact list by clicking the **To**, **Cc**, or **Bcc** links, located to the left of the To, Cc, and Bcc boxes.

Frequent Contacts

You can have quick access to your frequently used contacts by adding them to the Frequent Contacts box.



To add a contact to the Frequent Contacts box:

1. Click the **Contacts** tab.
2. Click the **Edit Contact** link for the contact. Or, click the **Add Contact** button to create a new contact.
3. Click the “**Add to Frequent Contacts**” checkbox.
4. Click the **Save** button.

Note: To display or hide the Frequent Contacts box, select **Settings / Composing Email**. Check or clear the “**Display the Frequent Contacts box**” checkbox.

Sender/Recipient Name Links

When you are viewing an email, you can click any name listed in the From, To, or Cc area to open a new Compose Email window, addressed to that person.

Resending an Email

1. To resend an email, click the **Sent** folder, located in the folder list.
2. Select or open the email you want to resend.
3. Click the **Re-Send Email** link.
4. Make changes to the email, as desired.
5. Click the **Send** button.

Saving or Editing a Draft

As you are composing an email, webmail will automatically save a draft of the email in the Drafts folder.

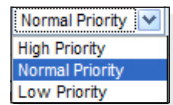
- If you decide you do not want to send the email, and you want to delete the draft, click the **Delete Draft** link, located in the lower right corner.
- If you do not have time to finish composing your email, click the “**Save as Draft**” link before closing the Compose Email window to save the latest version of the email.

To edit a draft, open the **Drafts** folder, and then double-click the draft. Or, select the draft, and then click the **Resume Draft** link.

Indicating Email Priority

By default, an email's priority is set to Normal.

When you are composing an email, you can click the Priority drop-down menu to assign a normal, high, or low priority.



This will not affect how your email is sent or received; it simply acts as a visual indicator that the email is a high, normal, or low priority item.

Requesting a Read Receipt

Read Receipts display a confirmation request when recipients open your email. You will receive an email confirmation as each recipient opens and confirms receipt of your email.

To attach a return receipt to an email you are composing, click the “**Request a Read Receipt**” checkbox, located below the addressing area of the Compose Email window.

Note: Not all email programs support this feature, and recipients can also ignore or refuse to send a confirmation receipt.

Attaching a File



1. To attach a file to an email you are composing, click the **Browse** button, located beside the **Attach** box.
2. Locate and select the file you want to attach.
3. Click the **Open** button. The attached file name will appear in the **Attach** box.

Note: To remove an attachment, click once on the attachment, and then press the **Delete** key on your keyboard.

Using HTML Format

When you use the HTML editing format for creating your email, you have access to advanced formatting tools. For example, you can use a variety of fonts and colors and create bulleted and numbered lists.

To switch between HTML and Plain Text formatting while you are composing an email, click the **HTML View** and **Plain Text View** links. Note that HTML formatting information is not retained if you switch to Plain Text View while composing an email.

Note: Composing in HTML is not available in Safari.

Checking Spelling

When you are composing an email, click the **Spell Check** link. Possible spelling errors will appear in red.

- Click once on the word and select from a list of possible spelling corrections.
- Or, select **Edit** to correct the spelling error manually.
- To add a word to the dictionary, select “**Add to Dictionary**”
- To change the dictionary language, click the **Language** drop-down menu and select a language.
- To exit the spell checker, click the **Exit Spell Check** link.

Managing Email

Sorting Email



Click the column headings that appear above the email list to sort according to read/new status, flagged/unflagged status, the sender's name, the email subject, the date the email was sent, or the email size.

Forwarding Multiple Email

To forward multiple email, check the box next to each email you want to forward, and then select **Forward** from the **Select Action** drop-down menu. In the resulting **Compose** window, the selected email will appear as attachments.

Deleting an Email

To delete an email, choose one of the following:

- Select or open the email and then click the **Delete** link.
- Click the checkbox next to each email you want to delete and then click the **Delete** button.

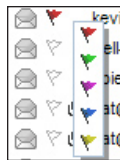
By default, email you delete are stored in the Trash folder. You can, however, adjust your Trash Options settings (**Settings / General Settings**) so that deleted email are permanently deleted, bypassing the Trash folder.

Note: To move an email out of the Trash folder, click the checkbox next to the email and then select a destination folder from the **"Move to Folder"** drop-down menu. Or, click and drag the email to another folder.

Flagging an Email

You can use colored flags to mark an email that needs your attention.

- To flag an email, click once on the flag icon.
- To flag several email, click the checkbox next to each email you want to flag, and then select **Add Flag** from the **Select Action** drop-down menu.
- To change the flag color, right-click the flag icon and select a color.
- To remove the flag, click the flag icon again.



Marking an Email as Read or New

- To mark an email as "read" or as "new," click once on the envelope icon.
- To mark several email as read or new, click the checkbox next to each email, and then select **"Mark as Read"** or **"Mark as New"** from the **Select Action** drop-down menu.

Reporting Spam

To report unfiltered spam, in any folder other than Spam, choose one of the following:

- Select or open the email and then click the **Report Spam** link.
- Click the checkbox next to each email you want to report and then select **Report Spam** from the **Select Action** drop-down menu.

Note: This will send the email to Cloudmark, our spam filtering provider, and move the email to your spam folder.

Reporting Not Spam

To report email that is improperly filtered as spam, in the Spam folder, choose one of the following:

- Select or open the email and then click the **Not Spam** link.
- Click the checkbox next to each email you want to report and then select **Not Spam** from the **Select Action** drop-down menu.

Note: This will move the email to your inbox and add the sender to your Safelist.

Exporting Email to a Zip File

1. Click the checkbox next to each email you want to export. To select all email on the current page, click the uppermost check box.
2. Select **"Export to Zip"** from the **Select Action** drop-down menu.
3. Save the zip file according to your web browser's directions

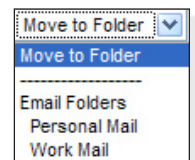
Moving an Email into a Folder

To move an email into another folder:

Click and drag the email from the email list to a folder in the folder list pane.

To move several email at one time:

1. Click the checkbox next to the email you want to move into another folder. To select all email on the current page, click the uppermost check box.
2. Select a folder from the **"Move to Folder"** drop-down menu. The selected email will be moved from the active folder into the folder you specified.



Note: When viewing an email in its own window, you can select a folder from the **"Move to Folder"** drop-down menu, located in the upper right corner. This will automatically move the active email to the selected folder.

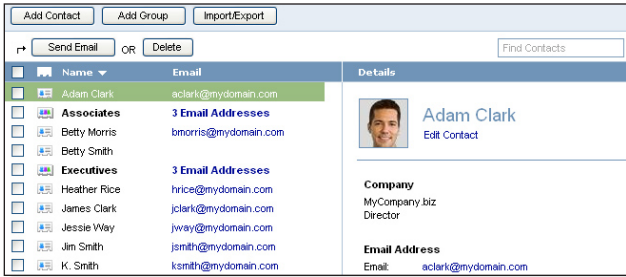
Adding a Sender to the Contact List

When you receive an email, you can add the sender's name and email address information to the contact list.

1. Click the green plus "+" sign next to the sender's name.
2. Make changes to the sender's information, as desired.
3. Click the **Save** button.

Contacts

Adding a New Contact



1. In the contact list, click the [Add Contact](#) button. Or, click the arrow on the [Contacts](#) tab and select [Add Contact](#).
2. Enter information about the contact in the fields provided.
3. To add a picture of your contact, upload an image file that is 50 pixels x 50 pixels.
4. When you are done, click the [Save](#) button. Your contact will appear in the contact list.

Adding a New Group

1. In the contact list, click the [Add Group](#) button. Or, click the arrow on the [Contacts](#) tab and select [Add Group](#).
2. Enter a name for the group in the [New Group Name](#) box.
3. If you have more than one contact list, select a list from the drop-down menu.
4. In the [Contacts](#) box, click once on the contact you want to add to your group. Or, to select several contacts at one time, choose one of the following:
 - To select several names, hold the **Ctrl** key as you click on each name.
 - To select a range of names, click on the first contact in the range, hold the **Shift** key, and then click the last contact in the range.
5. Click the **>** button to add the selected contact(s) to the group.
6. If you want to remove a name from the [New Group](#) box, click the name and then click the [Remove](#) button.
7. When you are done, click the [OK](#) button. Your group will appear in your contact list.

Editing or Deleting a Contact or Group

To edit a contact or group:

1. In the contact list, double-click the contact or group.
2. Make changes to the contact or group, as desired.
3. Click the [Save](#) button.

To delete a contact or group:

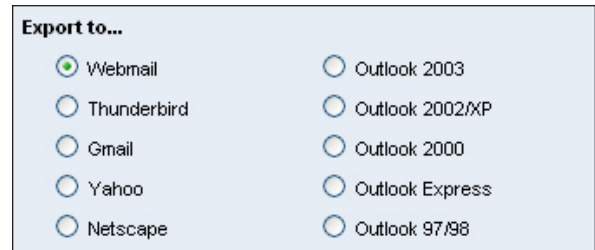
1. In the contact list, click the checkbox next to the contact or group you want to delete.
2. Click the [Delete](#) button.

Importing a Contact List

1. Create a Comma Separated Value (.csv) export file from your email application (e.g., Yahoo, Netscape, Outlook).
2. In the webmail contact list, click the [Import/Export](#) button.
3. In the [Import Contacts](#) section, click the [Browse](#) button.
4. Locate and select the .csv file you created in Step 1.
5. Click the [Open](#) button. The path for the .csv file will appear in the **“Select a File”** box.
6. Click the [Continue](#) button.
7. To ensure that your contact information is imported correctly, make changes to the field name assignments, as needed.
8. Click the [OK](#) button.

Exporting the Contact List

1. In the contact list, click the [Import/Export](#) button.
2. In the [Export Contacts](#) section, select the email application into which you want to import your contact list.



3. Click the [Export](#) button. Depending on your web browser settings, you may need to choose one of the following:
 - If your browser prompts you to save or open the .csv file, click the [Save](#) button.
 - If a new browser window appears, displaying the contact list information, select [File / Save As](#) to save the file.
4. Select the location where you want to save the .csv export file.
5. Click the [Save](#) button.

Using the Company Directory

If your email administrator has created a company directory, you can view up-to-date contact information about other users in your company and/or partner companies.

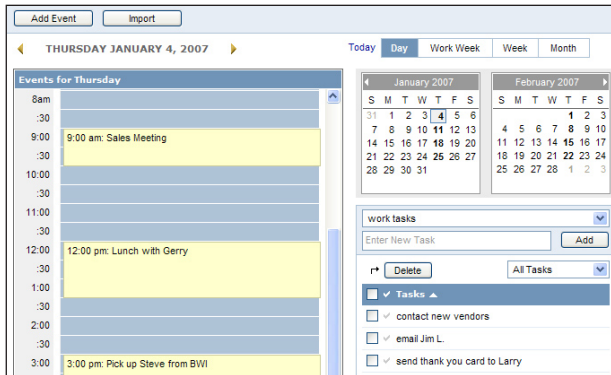
To view your company directory, click the [Company Directory](#) link, located in the left pane.



To keep your own contact information up-to-date, locate your name in the company directory list, double-click your name, and then make changes, as desired. (Note: Depending on your email administrator's settings, you may or may not be able to edit your contact information.)

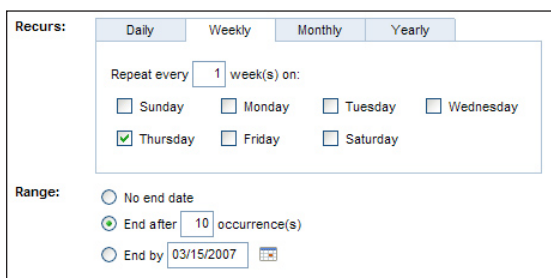
Calendar

Adding an Event



1. In the calendar, click the [Add Event](#) button. Or, double-click the time/day on which you want to add an event.
2. Enter a subject and date/time information, as desired.
3. Click the [Save](#) button.

Setting Recurrence Details



1. In the calendar, double-click the event you want to edit.
2. Click the [Set Recurrence](#) link.
3. Click the [Daily](#), [Weekly](#), [Monthly](#), or [Yearly](#) tab to create a daily, weekly, monthly, or yearly recurrence.
4. In the resulting tab, indicate how often the event should occur.
5. In the [Range](#) section, indicate when the recurrence should end.
6. When you are done, click the [Set Recurrence](#) button.
7. Click the [Save](#) button.

Creating a Private Event

If your account is set up to use shared calendaring, you may want to hide events that you want to keep private. Other users will see that the time is reserved, but all event information will be hidden.

1. In the calendar, double-click the event you want to edit.
2. Click the [Private Event](#) checkbox to make the event private.
3. Click the [Save](#) button.

Note: For more information about shared calendars, see the [Shared Calendars](#) help section.

Receiving Reminders

To receive an email reminder before an event:

1. In the calendar, double-click the event you want to edit.
2. Click the [Email](#) checkbox.
3. Indicate how soon before the event you want to be reminded.
4. Click the [Save](#) button.

To receive a pop-up alert reminder before an event:

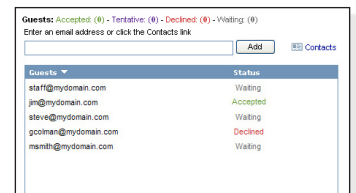
1. In the calendar, double-click the event you want to edit.
2. Click the [Alert](#) checkbox.
3. Indicate when you want to be reminded. Please note that you must be logged in to webmail to see the pop-up alert.
4. Click the [Save](#) button.

Inviting Guests to an Event

You can use webmail to invite guests to an event, manage guest responses, and send notifications of any changes. This feature is compatible with all iCal compliant calendar applications.

1. In the calendar, double-click the event you want to edit.
2. In the [Invite](#) section, click the [Add](#) button.

3. Enter an email address in the box and click the [Add](#) button. Or, click the [Contacts](#) link to select from contacts in your contact list.



4. When you are done adding contacts to the guest list, click the [Save](#) button.
5. Click the [Save](#) button again.
6. You will be prompted to indicate whether you want to send invitations to the guests on your guest list (or to new guests only, if you added new guests to the list). When you send invitations, guests are able to automatically send you a response — indicating that they have either accepted, tentatively accepted, or declined your invitation.

To view your guest list, and the status of each guest's response, double-click the event, and then click the [Guest List](#) link.

Importing a Calendar

1. Create a Comma Separated Value (.csv) export file from your calendar application.
2. In the webmail calendar, click the [Import](#) button.
3. Click the [Browse](#) button to locate and select the .csv file created in Step 1.
4. Click the [Open](#) button.
5. If you want to allow webmail to import duplicate events, click the ["Allow duplicate events"](#) checkbox.
6. Click the [Import](#) button. Your calendar events will be imported into your webmail calendar.

Shared Calendars

Sharing a Personal Calendar

If your account is set up to use shared calendaring, you may be able to control who can and cannot view your calendar. This setting is determined by your email administrator.

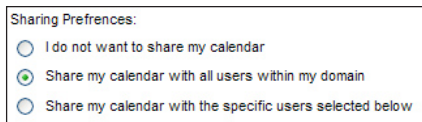


When your calendar is shared with other users, they are able to view your calendar and event details. Users cannot edit or add events to your calendar.

You may want to make certain events private (e.g., doctor appointments). To make an event private, see the “[Creating a Private Event](#)” help section. Or, to make all existing events private or public, see the “[Making All Events Private or Public](#)” help section.

1. To control who can and cannot view your personal calendar, click the arrow on the [Calendar](#) tab, and then select [Calendar Manager](#).
2. In the [Personal Calendars](#) box, click the [Sharing](#) link for your personal calendar.

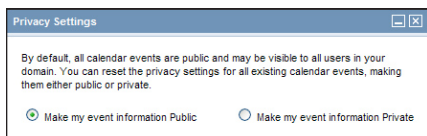
3. Indicate whether you want to share your calendar with no one, with all users in your domain, or with only specific users.



4. If you want to share your calendar only with specific users, select from the list of users in your domain. Or, enter an email address manually and click the [Add](#) button.
5. Click the [Save](#) button.

Making All Events Private or Public

When you are sharing your calendar with other users, you may want to make all existing events either private or public. When an event is private, other users will see that the time is reserved, but all event information will be hidden.



1. To make all existing events either private or public, click the arrow on the [Calendar](#) tab, and then select [Calendar Manager](#).
2. In the [Personal Calendars](#) box, click the [Privacy](#) link for your personal calendar.
3. Indicate whether you want to make all events public or private. Private events will still appear as busy/reserved time on your calendar, but all event information will be hidden. Public events can be opened and viewed by all shared users.
4. Click the [Save](#) button.

Note: To make a single event either public or private, double-click the event and then check or clear the “[Private Event](#)” checkbox.

Renaming a Personal Calendar

1. To rename a personal calendar, click the arrow on the [Calendar](#) tab, and then select [Calendar Manager](#).
2. In the [Personal Calendars](#) box, click the [Rename](#) link for your personal calendar.
3. Enter a new name in the “[Name of Calendar](#)” box.
4. Click the [Save](#) button.

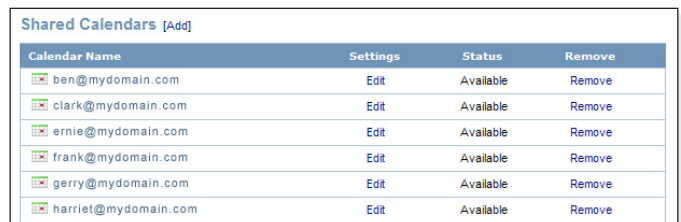
Deleting a Personal Calendar

Currently, users can only have one shared calendar, and it cannot be deleted. Soon, users will be able to create and manage multiple personal calendars.

Adding a Shared Calendar

To view another user’s calendar, the user must turn on the sharing feature and give you permission to view the calendar. See the “[Sharing a Personal Calendar](#)” help section for more information.

1. Click the arrow on the [Calendar](#) tab, and then select [Calendar Manager](#).



Calendar Name	Settings	Status	Remove
ben@mydomain.com	Edit	Available	Remove
clark@mydomain.com	Edit	Available	Remove
ernie@mydomain.com	Edit	Available	Remove
frank@mydomain.com	Edit	Available	Remove
gerry@mydomain.com	Edit	Available	Remove
harriet@mydomain.com	Edit	Available	Remove

2. Click the [Add](#) link, which appears next to the [Shared Calendars](#) heading. Or, click the green plus “+” icon, which appears next to the [Shared Calendar](#) list in the calendar pane.
3. Select from the list of available calendars. Or, enter an email address manually and click the [Add](#) button. The email address must exist in the system.
4. Click the [Save](#) button. The status of each shared calendar (available or unavailable) will appear in the [Status](#) column.
5. To view a shared calendar, click once on the calendar name, as it appears in the list or in the calendar pane.

Editing or Removing a Shared Calendar

Click the arrow on the [Calendar](#) tab, and then select [Calendar Manager](#). And then do one of the following:

- To rename or change the email address for a shared calendar, click the calendar’s [Edit](#) link.
- To remove a shared calendar from your list of shared calendars, click the calendar’s [Remove](#) link.

Search

Searching for an Email

When you are in an email folder (Inbox, Drafts, Sent, etc.), the Search box will appear above the email list. From the Search box, you can search for email within the active folder or all folders, or you can run a Google web search. Or, you can click the [Advanced](#) link to run a detailed search.

To search for an email using the Search box:

1. Click the folder icon on the [Search](#) box and indicate whether you want to search the active folder or all folders.

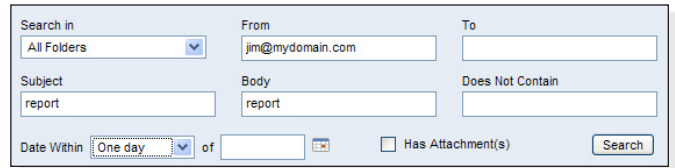


2. Enter the word(s) you want to search for in the [Search](#) box.
3. Click the [Search](#) button.
4. A list of email that contain the search criteria will appear in the email list. You can then refine the search by selecting a different folder, viewing only the email that contain attachments, or changing the search terms altogether.

Using Advanced Search

To search for an email using the advanced search tool:

1. Click the [Advanced](#) link, which appears to the right of the [Search](#) box.
2. Enter search criteria in the fields provided. You can also indicate a date range, or narrow down the search to only email that contain attachments.



3. Click the [Search](#) button.
4. A list of email that contain the search criteria will appear in the email list. You can then refine the search by selecting a different folder, viewing only the email that contain attachments, changing the date range, or changing the search terms altogether.
5. To minimize the [Advanced Search](#) area while retaining your search results, click the “-” button, located in the upper right corner of the search area. Or, to close the search and clear your results, click the “x” button.

Note: In Advanced Search, you can use “*” and “?” wildcards in the Subject and Body fields.

Searching the Web

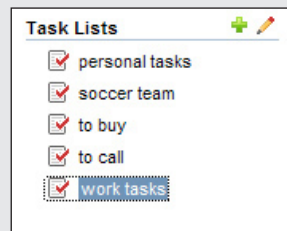
To run a Google web search:

1. Click the folder icon on the [Search](#) box and select [Google](#) from the drop-down menu.
2. Enter the word(s) you want to search for in the [Search](#) box.
3. Click the [Search](#) button. The Google results window will appear, displaying your results.

Tasks

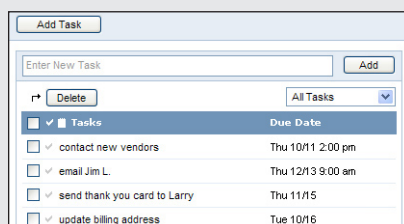
Adding a Task List

1. In tasks, click the green plus “+” icon, located in the task list pane.
2. Enter a name for the task list.
3. Click the [Save](#) button.



Adding a Task

1. In tasks, click once on a task list, as it appears in the task list pane.
2. In the “Enter a New Task” box, enter a task.
3. Click the [Add](#) button.



Or, to create a task from anywhere within webmail, click the arrow on the Tasks tab and select [Add Task](#). Select a task list, enter a task, and then click the [Save](#) button.

Working with Task Lists

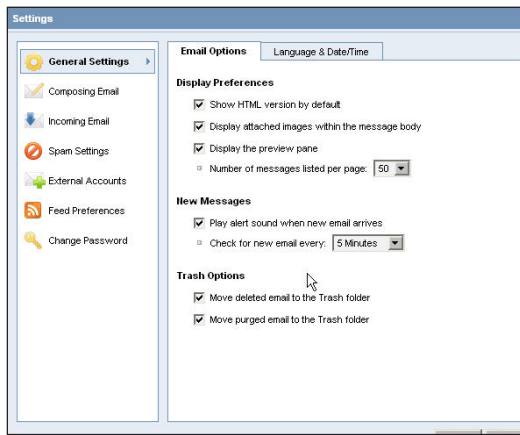
1. In tasks, click the pencil icon, located in the task list pane.
2. Choose one of the following:
 - To open a task list, click the task list name.
 - To delete a task, click the checkbox beside the task list and then click the [Delete](#) button.
 - To rename a task, click the task list’s [Edit](#) link.

Working with Tasks

- To edit a task, double-click the task.
- To mark a task as complete, click the checkmark icon, located to the left of the task name. Or, double-click the task, and click the [Completed](#) checkbox.
- To delete a task, click the checkbox next to the task, and then click the [Delete](#) button. To delete all tasks, click the uppermost checkbox, and then click the [Delete](#) button.
- To view all tasks, completed tasks, or incomplete tasks, click the drop-down menu and select [All Tasks](#), [Completed Tasks](#), or [Incomplete Tasks](#).
- To sort tasks alphabetically or according to complete/incomplete status, click the appropriate column header.

Settings

To manage all webmail settings, click the [Settings](#) link, located in the upper right corner.



General Settings / Email Options

Display Preferences

- Show HTML version by default — Indicate whether you want to view new email in HTML format by default.
- Display attached images within the message body — When an email contains attached images, the images will appear in the message body, by default. To turn this feature off, uncheck the checkbox. Attached images will appear in the Attachments area but not in the body of the message.
- Display the preview pane — By default, the preview pane will be available when you are viewing email folders. To turn this feature off, hiding the preview pane, uncheck the checkbox.

- Number of messages listed per page — Indicate how many email you want to display in the email list at one time. If you are using a slow connection, you may prefer to display only a few email at a time (e.g., 10 or 20).

New Messages

- Play alert sound when new email arrives — Plays a sound when email arrives in the Inbox.
- Check for new email every — Select how often webmail automatically checks for new mail.

Trash Options

- Move deleted email to the Trash folder — Check to have deleted items moved to the Trash folder. If unchecked, deleted email are deleted permanently.
- Move purged email to the Trash folder — Check to have purged items moved to the Trash folder. If unchecked, purged email are deleted permanently.

General Settings / Language & Date/Time

Language

- Default display language — Select from eight possible display languages.

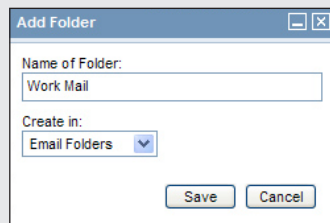
Date & Time

- Default date format — Select a month/day/year or day/month/year date format.
- Default time format — Select a 12 or 24 hour time display for messages.
- Current time zone — Select a time zone.

Using Folders

Adding a Folder

1. Click the arrow on the [Email](#) tab and select [Folder Manager](#).
2. Click the [Add Folder](#) button.
3. Enter a name for the folder in the “Name of Folder” box.
4. To place the folder inside of an existing folder, select a folder from the “Create in” drop-down menu.
5. Click the [Save](#) button.



Moving a Folder into Another Folder

1. Click the arrow on the [Email](#) tab and select [Folder Manager](#).
2. Click the checkbox next to the folder(s) you want to move into another folder.
3. Select a folder from the “Move to Folder” drop-down menu.

Renaming a Folder

1. Click the arrow on the [Email](#) tab and select [Folder Manager](#).
2. Click the [Edit](#) link for the folder you want to rename.
3. Enter a new name in the “Name of Folder” box.
4. Click the [Save](#) button.

Viewing Folder Size

1. Click the arrow on the [Email](#) tab and select [Folder Manager](#).
2. Click the [Update Sizes](#) button. Each folder’s total file size will appear in the [Size](#) column.

Deleting or Purging a Folder

1. Click the arrow on the [Email](#) tab and select [Folder Manager](#).
2. Choose one of the following:
 - To delete the emails contained in a folder, click the [Purge](#) link, located in the folder’s [Purge](#) column.
 - To delete the entire folder and its emails, click the checkbox next to the folder and then click the [Delete](#) button.

Composing Email / Composing

Composing

- Use auto-complete when addressing email — Check to have webmail attempt to complete typed addresses with a matching address from your contact list.
- Display the Frequent Contacts box — Check to display the Frequent Contacts box, which appears in the Compose Email window.
- Disable browser's built-in spell checker — Check to disable the browser's automatic spell checking.
- Save outgoing email in the Sent folder — Check to copy all outgoing email to the Sent folder.
- Default font in HTML format — Select a default font for HTML-formatted email.
- Default font size in HTML format — Select a default font size for HTML-formatted email.

Replying & Forwarding Citations

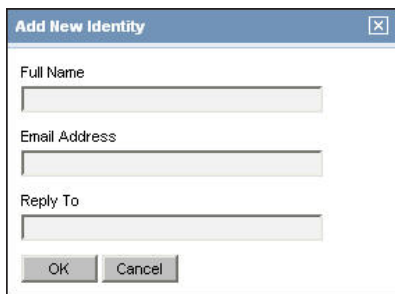
Remove or customize the label used when forwarding or replying to email. Examples are provided.

Composing Email / Identities

Use the Identities feature to make changes to your display name, email address, and reply address.

To add a new identity:

1. Click the [Add New Identity](#) button.



2. Enter your display name and email address in the spaces provided, as needed.
3. In the [Reply To](#) box, enter the address you want recipients to use when they reply to an email you have sent.
4. Click the [OK](#) button.

To edit an identity, select an identity, and click the [Edit](#) button.

To delete an identity, select an identity, and click the [Delete](#) button.

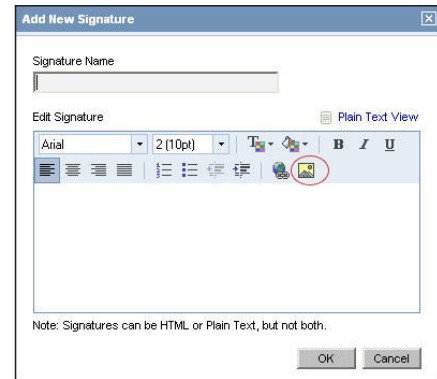
To set an identity as the default, select an identity, and click the [Set as Default](#) button.

Composing Email / Signatures

Use the Signatures feature to make changes to your email signatures.

To add a new signature, click the [Add New Signature](#) button, and enter a signature name and a signature in the spaces provided.

Images can be uploaded for use in the signature using the [Insert/Edit Image](#) button in the HTML composer menu bar.



Use the [Plain Text View](#) and [HTML View](#) links to switch between the two.

Note: Signatures can be HTML or plain text, but not both.

To edit a signature, select a signature, and click the [Edit](#) button.

To delete a signature, select a signature, and click the [Delete](#) button.

To set a signature as the default, select a signature, and click the [Set as Default](#) button.

Choose options for when signatures are automatically inserted in email, as needed.

Incoming Email / Auto-Reply

Use the auto-reply feature to set up messages that are automatically sent to any person who sends you an email.

- Status — Turn auto-reply on or off.
- Auto-Reply Message — Enter your outgoing message.
- Enable only during the following time frame — Check to have auto-reply only function during a specific time period.
- Start on — Select start date and time.
- End on — Select end date and time.

Incoming Email / Forwarding

Use the forwarding feature to send incoming email to another account.

- Status — Turn forwarding on or off.
- Save a copy of forwarded email — Check to receive a copy of all forwarded email.
- Enable only during the following time frame — Check to have forwarding only function during a specific time period.
- Start on — Select start date and time.
- End on — Select end date and time.

Incoming Email / Filtering

Use email filtering to have webmail automatically organize your incoming email.

To add a new filter:

1. Click the [Add New Filter](#) button.
2. Enter a Filter Name.
3. Enter filtering criteria:
 - From — Email from these addresses will be filtered.
 - To/Cc — Email sent or carbon copied to these addresses will be filtered.
 - Subject — Email with a subject line that contains, doesn't contain, or begins with the entered words or phrases will be filtered.
 - Body — Email with a body that contains or doesn't contain the entered words or phrases will be filtered.

The screenshot shows the 'Add Email Filter' dialog box. It has a title bar with 'Add Email Filter' and a close button. The 'Filter Name' section has a text input field. The 'Criteria' section has a sub-header 'Please enter filter criteria for at least one field.' and four rows: 'From', 'To/Cc', 'Subject', and 'Body'. Each row has a text input field, a dropdown menu, and an 'and...' button. The 'Subject' dropdown is open, showing options like 'contains', 'doesn't contain', and 'begins with'. The 'Action' section has three checkboxes: 'Move to folder', 'Forward to', and 'Delete immediately'. The 'Move to folder' checkbox is checked, and it has a dropdown menu showing 'Inbox' and a 'New Folder' button. The 'Forward to' checkbox is unchecked and has a text input field. The 'Delete immediately' checkbox is unchecked. At the bottom are 'OK' and 'Cancel' buttons.

4. Indicate what action you want the filter to perform on the email that match the criteria you indicated:
 - Move to folder — Check to have filtered email moved to a folder selected in the drop-down menu. Click the [New Folder](#) button to create a new folder for the filtered email.
 - Forward to — Check to have filtered email sent to the entered email address.
 - Delete immediately — Check to have filtered email automatically deleted.
5. Click the [OK](#) button. The filter will appear in the Current Filters section.

To edit an existing filter, select the filter, as it appears in the Current Filters section, and click the [Edit](#) button.

To delete an existing filter, select the filter, as it appears in the Current Filters section, and click the [Delete](#) link.

Note: If you are using email software (Outlook, Netscape Mail, Eudora, etc.) with a POP3 connection, your email software only downloads email that are stored in your Inbox folder. If you use email filters to move email into another folder, those email will not be downloaded by your POP3 email software.

Spam Settings / Preferences

Spam filtering tools work to detect and filter out spam. The changes you make to your spam filtering preferences will be in effect regardless of your email software; even if you use Outlook, Netscape Mail, Eudora, etc., your spam will be filtered, according to your preferences, before the email reaches your inbox.

Spam Filtering

- Status — Turn spam filtering on, off, or set for exclusive.

Note: Exclusive filtering will only allow incoming email from addresses or IPs on your Safelist.

The screenshot shows the 'Spam Filtering' settings dialog. It has a title bar 'Spam Filtering'. The 'Status' section has three radio buttons: 'On' (selected), 'Off', and 'Exclusive*'. Below this is a note: '* You will only receive email from addresses or IPs on your Safelist.' The 'Spam Handling' section has four radio buttons: 'Deliver to the Spam folder [Cleanup Options]' (selected), 'Delete the email immediately', 'Deliver to the email address: [input]@adminchiron.com', and 'Include [SPAM] at the beginning of the subject line'.

Spam Handling

Indicate how the spam filter should handle incoming spam.

- Deliver to the Spam folder — Spam email will be delivered to your Spam folder.
- Delete the email immediately — Spam email will be deleted automatically.
- Deliver to the email address — Spam email will be forwarded to the email address you indicate.
- Include [SPAM] at the beginning of the subject line — Spam email will be delivered to your Inbox, but will include the text "[SPAM]" in the Subject line.

Click the Spam folder [Cleanup Options](#) link, if you want to limit the amount of spam that is stored in the folder. Indicate how often your Spam folder should be purged automatically — after a specific number of days or specific number of email. Or, to turn off the automatic cleanup, select "Never automatically delete spam."

Note: If you are using email software (Outlook, Netscape Mail, Eudora, etc.) with a POP3 connection, you will need to log in to webmail to view your Spam folder.

Spam Settings / Safelist

- Safelisted Domains & Email Addresses — To add domains and email addresses to your Safelist, click the [Add](#) button. Enter the domain or email address, and click the [Add](#) button.
- Safelisted IP Addresses — To add IP addresses to your Safelist, click the [Add](#) button. Enter the IP address, and click the [Add](#) button.

To delete any entry, select the domain, email address, or IP address, and click the [Delete](#) button.

Spam Settings / Blacklist

- Blacklisted Domains & Email Addresses — To add domains and email addresses to your Blacklist, click the [Add](#) button. Enter the domain or email address, and click the [Add](#) button.
- Blacklisted IP Addresses — To add IP addresses to your Blacklist, click the [Add](#) button. Enter the IP address, and click the [Add](#) button.

To delete any entry, select the domain, email address, or IP address, and click the [Delete](#) button.

External Accounts

Use the External Accounts settings to have webmail check your external email accounts.

To add an external account:

1. Click the [Add External Account](#) button.
2. Enter a name for the account, the server name, username, password, and the folder for the delivered email.
3. This is a POP3 connection, so check “[Leave email on server](#)” to leave a copy of the email on the external account server.
4. Click the [OK](#) button.

To edit an existing external account, select the account, and click the [Edit](#) button.

To delete an existing external account, select the account, and click the [Delete](#) button.

Change Password

To change your password:

1. Click [Change Password](#) in the left menu.
2. Enter your current and new password, and confirm your new password.



2. Click the [Save](#) button. You will see a confirmation message indicating that your new password was successfully changed and that webmail needs to reload.
3. Close any open webmail windows, and click the [OK](#) button.

Copyright © 2009 Document Authors. Some rights reserved.

This work is licensed under a Creative Commons License:

<http://creativecommons.org/licenses/by-nc-sa/2.0/>